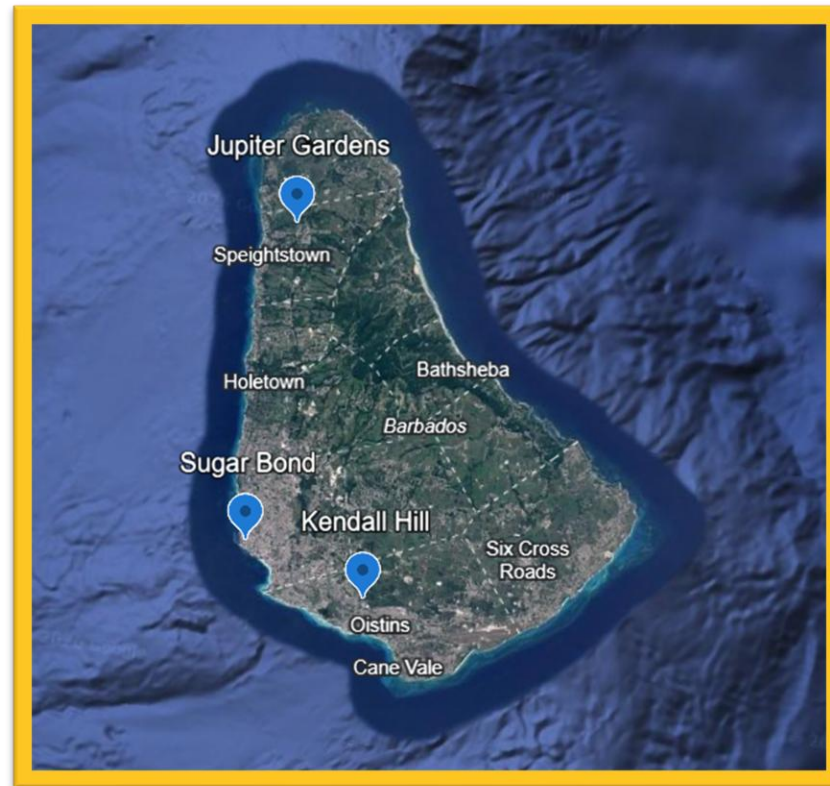




DEPUTY POWER

215 Queen St W, Cambridge, ON
N3C 1G6, Unit B-214

Barbados Battery Energy Storage Platform



3 × 10 MW / 40 MWh (Class 5 BESS)



Leadership Team



Jeremy Goertz, MBA, P. Eng
Managing Partner
Business Development



Jake Wang, P. Eng
Managing Partner
Strategic Initiatives



Stefan Goertz, P. Eng
Managing Partner
Commercial & Delivery



SUNGROW

TOSHIBA



www.tomoripower.com

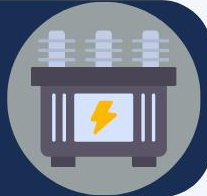
Who Is Tomori Power?



1 Renewable Energy Electrical Experts



2 Electrical Experts With A Relationship Focus



3 Professional Engineering Electrical Solutions With Suppliers



Project Experience



**Multi-Industry Highly Technical
Project Experts**

**500MW /
750 MWH**

**ACROSS
50+
PROJECTS**

**VARIOUS
INDUSTRIES**

Project Types:

- Solar
- Solar + Battery
- Standalone Battery
- Microgrids

Installed At:

- Extrusion Facilities
- Oil Refineries
- Sterilization Plants
- Paper Products

Installed At:

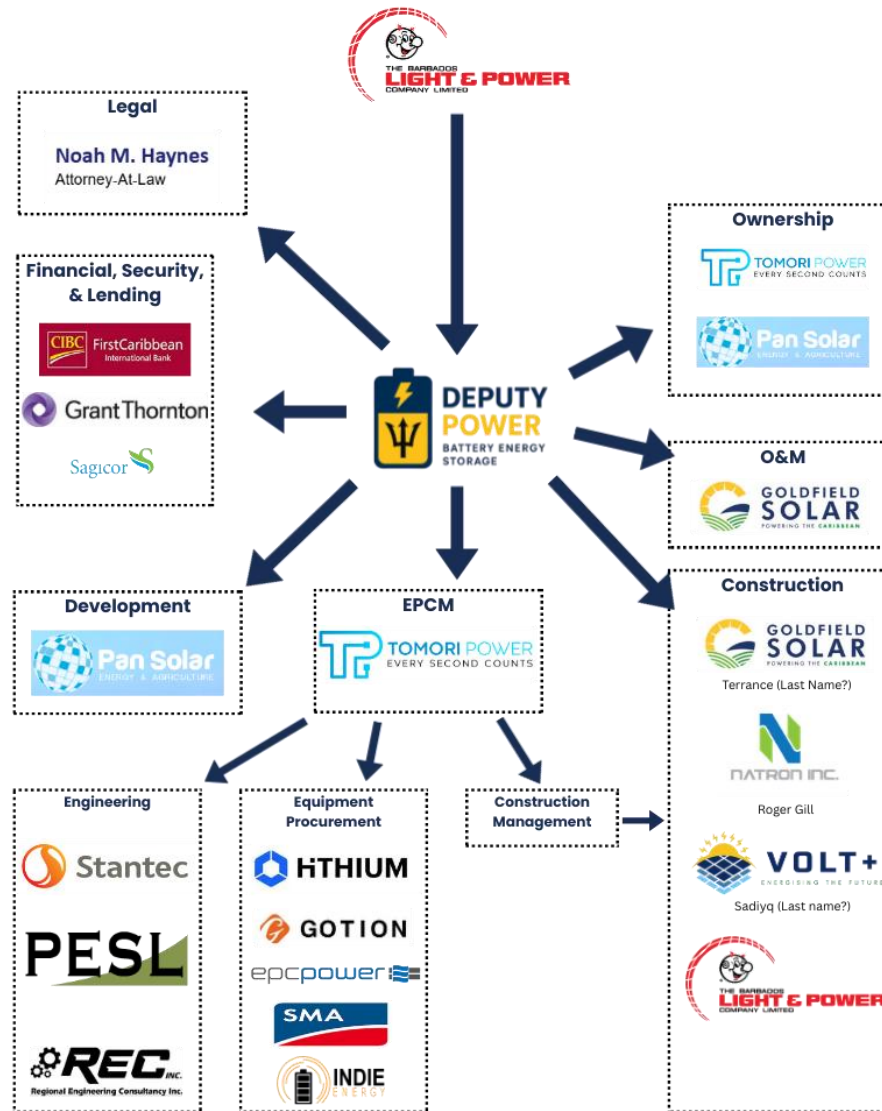
- Datacenters
- Remote Communities
- Utilities
- Pharmaceutical Manufacturing

Investment Overview

- Portfolio of utility-scale battery energy storage systems in Barbados
 - 3x 10 MW / 40 MWh LFP BESS projects
 - Bid into national BESS RFP under regulated electricity framework
 - Long-term, contracted infrastructure-style revenues



Execution Plan





Commercial & Credit Structure



- Long-term Energy Storage Agreement with national utility
 - Capacity-style payments for availability and performance
 - ~\$2.5MM USD/ per year revenue for 10MW site
 - Gross profit ~90%
 - Energy Storage License term ~16 years from COD
 - Possible extension to 20 years
 - Central Bank–supported liquidity guarantee for payment delays



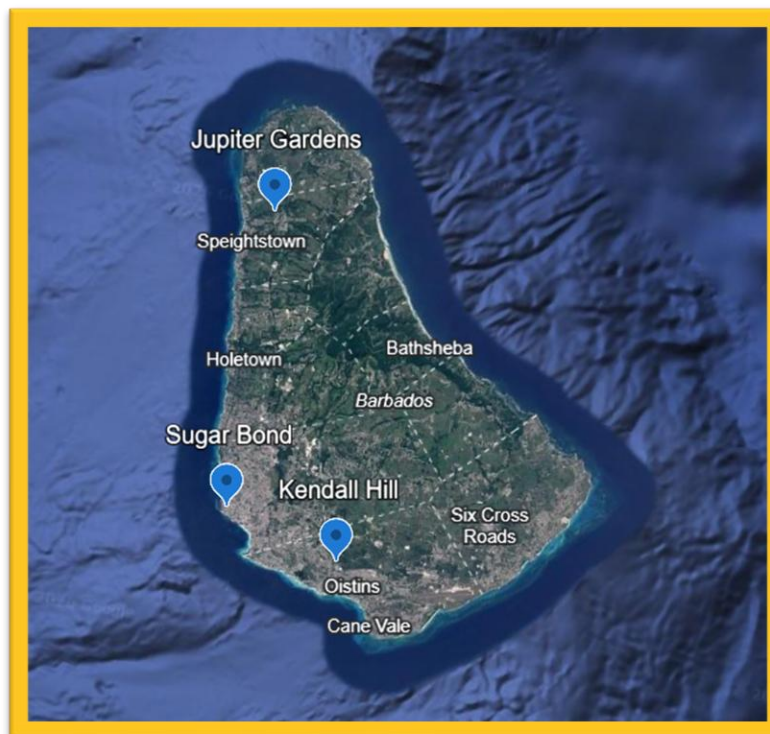
Project & Portfolio Financial Summary



	Project (\$USD MM)	Portfolio (\$USD MM)
Total Cost	\$19.7	\$59.1
Total Debt	\$13.9	\$41.7
Total Equity	\$5.8	\$17.4
Revenue	\$2.5 / Year	\$7.5 / Year
IRR	>7.5%	>7.5%
ROE	>25%	>25%

Project Portfolio

- Jupiter Gardens – 10 MW / 40 MWh – North Substation (24.9 kV)
- Kendall Hill – 10 MW / 40 MWh – Watton Substation (24.9 kV)
- Sugar Bond – 10 MW / 40 MWh – Spring Garden Substation (24.9 kV)





Equity Thesis & Next Steps



- Contracted, non-merchant cash flows
 - Sovereign-backed liquidity enhancement
 - Portfolio optionality with per-site award structure
 - Equity deployed only into awarded projects
- Next steps:
 - Sign NDA and share firm details
 - Commitment letter to support the equity position and enhance the bid
 - Negotiate final term sheet
 - Funding in October 2026